

# Fauna Spotter Catcher Summary

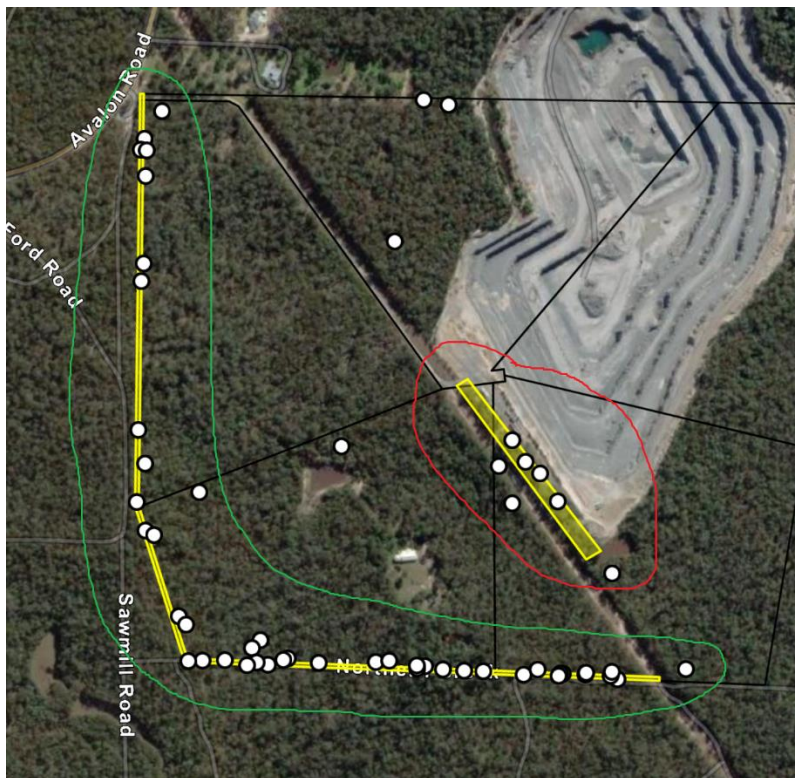
23 July 2024

<b>To:</b>	Dick Karreman
<b>CC:</b>	Jeromy Claridge, Darren Maxwell
<b>From:</b>	Matthew Whitehouse
<b>Subject:</b>	Karreman Quarries Pty Ltd – Fauna Spotter Catcher Work Summary
<b>Ref:</b>	KAR-002

## 1.0 Summary of Works Conducted

Attexo was engaged by Karreman Quarries on the 22<sup>nd</sup> and 23<sup>rd</sup> of July to undertake Fauna Spotter Catcher activities and to conduct Animal Breeding Place Surveys to support the development of a new powerline easement. On the 22<sup>nd</sup> of July, and after the completion of Animal Breeding Place Surveys across the red area (shown on the figure below), this vegetation was cleared by a single excavator, who was supervised by 2 Attexo Fauna Spotter Catchers. Only 2 animals were encountered during this operation which have been summarised in **Section 2**. No fauna fatalities were encountered.

The Attexo Fauna Spotter Catchers returned to site on the 23<sup>rd</sup> to conduct Animal Breeding Place Surveys through the Green area (shown on the figure below). This information was then provided to the Attexo ecology team to support the development of a Low-Risk Species Management Plan application.





# Fauna Spotter Catcher Summary

## 2.0 Summary of Fauna Captures and Relocations

A summary of the fauna species that were captured and relocated during clearing operations has been provided in the following Table. This information has been collected in a format that is specified in Attexo's Rehabilitation Permit (WA0054353). If additional information is required, please let an Attexo representative know.

Common Name or Scientific Name	Details of wildlife captured					Release or disposal details of captured wildlife			Comments	
	Date of capture	Name of caller	Number captured	Location from where wildlife was captured		Date of release	Location where wildlife was released		Other disposal details (deaths, escapes, etc.)	Other remarks
Eastern Blue Tounge Lizard ( <i>Tiliqua scincoides scincoides</i> )	22/07/24	Karreman Quarries	1	-27.6156	153.1892	22/07/24	-26.6137	153.1886	Alive	Individual relocated into surrounding habitat
Eastern Dwarf Tree Frog ( <i>Litoria fallax</i> )	22/07/24	Karreman Quarries	1	-27.6156	153.1892	22/07/24	-26.6137	153.1886	Alive	Individual relocated into surrounding habitat