



**APPROVAL**

**West Mt Cotton Quarry Expansion, Redland City, Qld (EPBC 2018/8340)**

This decision is made under sections 130(1) and 133(1) of the *Environment Protection and Biodiversity Conservation Act 1999* (Cth) (the EPBC Act). Note that section 134(1A) of the EPBC Act applies to this approval, which provides in general terms that if the approval holder authorises another person to undertake any part of the action, the approval holder must take all reasonable steps to ensure that the other person is informed of any conditions attached to this approval, and that the other person complies with any such condition.

**Details**

<b>Person to whom the approval is granted (approval holder)</b>	KARREMAN QUARRIES PTY LTD
<b>ACN of approval holder</b>	010 168 742
<b>Action</b>	To expand and operate the existing West Mount Cotton Quarry site, and associated infrastructure, in Redland City, Queensland [see EPBC referral 2018/8340].

**Approval Decision**

My decision on whether or not to approve the taking of the action for the purposes of the controlling provision for the action is as follows.

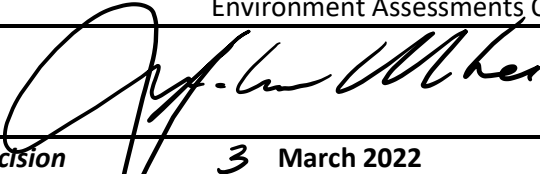
**Controlling Provisions**

Listed Threatened Species and Communities	
Section 18	Approve
Section 18A	Approve

**Period for which the approval has effect**

This approval has effect until 31 March 2075.

**Decision-maker**

<b>Name and position</b>	Andrew McNee Assistant Secretary Environment Assessments Queensland and Sea Dumping Branch
<b>Signature</b>	
<b>Date of decision</b>	3 March 2022

**Conditions of approval**

This approval is subject to the conditions under the EPBC Act as set out in ANNEXURE A.

---

## ANNEXURE A – CONDITIONS OF APPROVAL

---

### Part A – Conditions specific to the action

---

#### Maximum Clearance Limits

1. The approval holder must not **clear** outside the **project area**.
2. The approval holder must not **clear** more than 5 ha within the **project area** in any calendar year.
3. The approval holder must not **clear** more than:
  - a. 51.52 ha of **Koala habitat**
  - b. 48.3 ha of **Greater Glider habitat**
  - c. 48.3 ha of **Grey-headed Flying-fox foraging habitat**.
4. For the protection of **Koalas** in the **project area**, the approval holder must:
  - a. ensure that a **fauna spotter/catcher** supervises all **clearing** activities and is given sufficient authority to ensure that such activities do not cause injury or death of **Koalas**.
  - b. **clear** in accordance with all provisions for sequential clearing required under Part 3 of the current official version of the *Nature Conservation (Koala) Conservation Plan 2017* approved under the *Nature Conservation Act 1992* (Qld) so as to ensure that Koalas safely move out of areas subject to **clearing** and into connected areas of **Koala habitat**
  - c. install **Koala exclusion fencing** around all areas of **construction** work, immediately after **clearing** and prior to the commencement of **construction**, so as to prevent **Koalas** entering all areas where **construction** is taking place. The **Koala exclusion fencing** around each **construction** area must remain in place until **construction** activities within that fenced **construction** area are completed
  - d. implement **traffic calming measures** and ensure that the speed of all vehicles on construction roads in the **project area** is no greater than 40 km/h at any time (except in an emergency) so as to minimise the risk to **Koalas** of vehicle strike.

#### Environmental Offset Requirements

5. To compensate for the **clearance** of habitat for **protected matters** up to the limits specified in condition 3, the approval holder must, prior to the **commencement of the action** and for the duration of this approval, implement all three plans that comprise the **Offset Area Management Plans**.
6. In addition to implementing the **Offset Area Management Plans**, the approval holder must ensure that, within 20 years of the **commencement of the action**, the following outcomes are achieved at each of the three places that comprise the **offset sites**:
  - a. average **recruitment of woody perennial species** in the **ecologically dominant layer** greater than 75% of the **benchmark** for relevant **Regional Ecosystems** present
  - b. average **tree canopy cover** greater than 50% (and less than 200%) of the **benchmark** for relevant **Regional Ecosystems** present
  - c. average **tree canopy height** greater than 70% of the **benchmark** for relevant **Regional Ecosystems** present
  - d. average number of **large trees** greater than 50% of the **benchmark** for relevant **Regional Ecosystems** present
  - e. average **native tree species richness** greater than 90% of the **benchmark** for relevant **Regional Ecosystems** present
  - f. average **weed cover** less than 4% of the **benchmark** for relevant **Regional Ecosystems** present.

7. In addition to implementing the **Offset Area Management Plans**, the approval holder must ensure that, once achieved, the outcomes specified in condition 6 are maintained for the period of effect of this approval at each of the three places that comprise the **offset sites**. If the approval holder can demonstrate that any commitment in the **Offset Area Management Plans** prevents the achievement or maintenance of the outcomes specified in condition 6, then the approval holder must submit for approval a revised version of any such **Offset Area Management Plans** which enables the achievement or maintenance of the outcomes specified in condition 6.
8. In addition to implementing the **Offset Area Management Plans**, the approval holder must ensure that each of the following increases to the **habitat quality score** at each **offset site** has been achieved or exceeded within 20 years of the **commencement of the action**:
  - a. **Offset Site 1: Pineapple farm**
    - i. **Koala habitat = 2 habitat quality score** unit increase
    - ii. **Greater Glider habitat = 1 habitat quality score** unit increase
    - iii. **Grey-headed Flying-fox foraging habitat = 2 habitat quality score** unit increase
  - b. **Offset Site 2: University farm**
    - i. **Koala habitat = 2 habitat quality score** unit increase
    - ii. **Greater Glider habitat = 1 habitat quality score** unit increase
    - iii. **Grey-headed Flying-fox foraging habitat = 3 habitat quality score** unit increase
  - c. **Offset Site 3: Audale**
    - i. **Koala habitat = 1 habitat quality score** unit increase
    - ii. **Greater Glider habitat = 1 habitat quality score** unit increase
    - iii. **Grey-headed Flying-fox foraging habitat = 2 habitat quality score** unit increase
9. In addition to implementing the **Offset Area Management Plans**, the approval holder must ensure that, once achieved, each of the increases to the **habitat quality score** at all **offset sites** is maintained or exceeded over the period of effect of this approval. If the approval holder can demonstrate that any commitment in the **Offset Area Management Plans** prevents the achievement or maintenance of the increases to the **habitat quality score** specified in condition 8, then the approval holder must submit for approval a revised version of any such **Offset Area Management Plans** which enables the achievement or maintenance of the increases to the **habitat quality score** specified in condition 8.

### **Offset Implementation and Reporting**

10. Within 60 **business days** after the end of each 5 year period from the **commencement of the action**, until the expiry of this approval, the approval holder must submit to the **department** and publish on the **website** for the remainder of the period of the approval a report specifying in detail progress (or lack thereof) towards achieving and/or maintaining each of the **completion criteria**. The report must:
  - a. report the outcomes achieved in respect of each **interim performance target** in the period since the commencement of the action
  - b. report in detail the outcomes achieved in respect of each **interim performance target** in the last five years
  - c. describe the results and effectiveness of all management actions implemented during the last five years, including, but not limited to, progress made towards achieving the outcomes specified in condition 7

- d. include all monitoring results, including all confirmed sightings, injuries and mortalities of **protected matters** in a format consistent with the **Guidelines for biological survey and mapped data**
  - e. detail any **interim performance targets** not met, describe all corrective actions taken and evaluate their effectiveness
  - f. identify any further corrective actions and/or adaptive management actions required to meet **interim performance targets** and/or **completion criteria**.
11. Within 60 **business days** after the end of 20 years from the **commencement of the action**, the approval holder must submit a report that documents whether or not the entirety of all **offset sites** have fully achieved and maintained all **completion criteria**.
  12. If any **interim performance target** has not been met in the previous 5-year reporting period, or if any of the **completion criteria** have not been met within 20 years of **commencement of the action**, **clearing** and **operations** must be suspended. If **clearing** and **operations** are suspended in this manner, **clearing** and **operations** must not resume until the **Minister** is satisfied with requirements and/or outcomes required under the conditions of approval, including (but not limited to) conditions 10 and 11.
  13. If any **completion criterion** has not been achieved within 20 years from the **commencement of the action**, the approval holder must, within 6 months after the end of 20 years from the **commencement of the action**, submit to the **department** for the **Minister's** approval an Offset Management Plan for additional offsets to address the shortfall in environmental offsets.
  14. If an Offset Management Plan for additional offsets is required in accordance with condition 13 and an Offset Management Plan has not been approved by the **Minister** in writing within 10 months of the end of 20 years from the **commencement of the action**, **operations** must cease. In this event, the approval holder may only re-commence **operations** once an approved Offset Management Plan, or any subsequent version of the Offset Management Plan, is approved by the **Minister** in writing.

#### **Legal Securing of Offsets**

15. The approval holder must **legally secure** all **offset sites** within 12 months from the date of the **commencement of the action**. The associated **Offset Area Management Plans** must be attached to the legal mechanism used to **legally secure** the **offset sites**.
16. The approval holder must provide to the **department** evidence of the legal mechanism used to **legally secure** the **offset sites** within 5 **business days** of the legal mechanism being executed.
17. The legal mechanism used to **legally secure** the **offset sites** must remain in force from the date of obtaining **legal security** for at least the remaining period of this approval.

---

#### **Part B – Standard administrative conditions**

---

##### **Notification of date of commencement of the action**

18. The approval holder must notify the **department** in writing of the date of **commencement of the action** within 10 **business days** after the date of **commencement of the action**.
19. If the **commencement of the action** does not occur within 5 years from the date of this approval, then the approval holder must not **commence the action** without the prior written agreement of the **Minister**.

##### **Compliance records**

20. The approval holder must maintain accurate and complete **compliance records**.
21. If the **department** makes a request in writing, the approval holder must provide electronic copies of **compliance records** to the **department** within the timeframe specified in the request.

**Note: Compliance records** may be subject to audit by the **department** or an independent auditor in accordance with section 458 of the **EPBC Act**, and or used to verify compliance with the conditions. Summaries of the result of an audit may be published on the **department's** website or through the general media.

### **Submission and publication of plans**

22. The approval holder must:

- a. submit **plans** electronically to the **department**
- b. publish each **plan** on the **website** within 20 **business days** of the date:
  - i. of this approval, if the version of the **plan** to be implemented is specified in these conditions, or
  - ii. the **plan** is approved by the **Minister**, if the **plan** requires the approval of the **Minister**.
- c. exclude or redact **sensitive ecological data** from **plans** published on the **website** or provided to a member of the public
- d. keep **plans** published on the **website** until the end date of this approval.

23. The approval holder must ensure that any **monitoring data** (including **sensitive ecological data**), surveys, maps, and other spatial and metadata required under conditions of this approval, is prepared in accordance with the **department's Guidelines for biological survey and mapped data** (2018) and submitted electronically to the **department** in accordance with the requirements of those **plans**.

### **Annual compliance reporting**

24. The approval holder must prepare a **compliance report** for each 12 month period following the date of **commencement of the action**, or otherwise in accordance with an annual date that has been agreed to in writing by the **Minister**. The approval holder must:

- a. publish each **compliance report** on the **website** within 60 **business days** following the relevant 12 month period
- b. notify the **department** by email that a **compliance report** has been published on the **website** and provide the weblink for the **compliance report** within 5 **business days** of the date of publication
- c. keep all **compliance reports** publicly available on the **website** until this approval expires
- d. exclude or redact **sensitive ecological data** from **compliance reports** published on the **website**
- e. where any **sensitive ecological data** has been excluded from the version published, submit the full **compliance report** to the **department** within 5 **business days** of publication.

**Note: Compliance reports** may be published on the **department's** website.

### **Reporting non-compliance**

25. The approval holder must notify the **department** in writing of any: **incident**; non-compliance with the conditions; or non-compliance with the commitments made in **plans**. The notification must be given as soon as practicable, and no later than 2 **business days** after becoming aware of the **incident** or non-compliance. The notification must specify:

- a. any condition which is or may be in breach
- b. a short description of the **incident** and/or non-compliance
- c. the location (including co-ordinates), date, and time of the **incident** and/or non-compliance. In the event the exact information cannot be provided, provide the best information available.

26. The approval holder must provide to the **department** the details of any **incident** or non-compliance with the conditions or commitments made in **plans** as soon as practicable and no later than 10 **business days** after becoming aware of the **incident** or non-compliance, specifying:

- a. any corrective action or investigation which the approval holder has already taken or intends to take in the immediate future
- b. the potential impacts of the **incident** or non-compliance
- c. the method and timing of any remedial action that will be undertaken by the approval holder.

#### **Independent audit**

27. The approval holder must ensure that **independent audits** of compliance with the conditions are conducted at least every 5 years and if requested in writing by the **Minister**.
28. For each **independent audit**, the approval holder must:
- a. provide the name and qualifications of the independent auditor and the draft audit criteria to the **department**
  - b. only commence the **independent audit** once the audit criteria have been approved in writing by the **department**
  - c. submit an audit report to the **department** within the timeframe specified in the approved audit criteria.
29. The approval holder must publish the audit report on the **website** within 10 **business days** of receiving the **department's** approval of the audit report and keep the audit report published on the **website** until the end date of this approval.

#### **Revision of Management Plans**

30. The approval holder may, at any time, apply to the **Minister** for a variation to a **plan** approved by the **Minister** by submitting an application in accordance with the requirements of section 143A of the **EPBC Act**. If the **Minister** approves a revised **plan** then, from the date specified, the approval holder must implement the revised **plan** in place of the previous **plan**.

#### **Completion of the action**

31. Within 20 business days after the **completion of the action**, the approval holder must notify the **department** in writing and provide **completion data**.

---

### **Part C – Definitions**

---

In these conditions, except where contrary intention is expressed, the following definitions are used:

**Benchmark** means the BioCondition attribute benchmark for the **Regional Ecosystem** as defined in the most recent officially released version of *BioCondition: A Condition Assessment Framework for Terrestrial Biodiversity in Queensland. Assessment Manual* (version 2.2, 2015), Queensland Herbarium, Department of Science, Information Technology, Innovation and Arts.

**Business day** means a day that is not a Saturday, a Sunday or a public holiday in the state or territory of the action.

**Clear/ance/ing** means the cutting down, felling, thinning, logging, removing, killing, destroying, poisoning, ringbarking, uprooting or burning of vegetation (but not including weeds – see the *Australian weeds strategy 2017 to 2027* for further guidance).

**Commencement of the action/commence the action** means the first instance of any specified activity associated with the action including **clearing** and **construction**. **Commencement of the action** does not include minor physical disturbance necessary to:

- i. undertake pre-clearance surveys or monitoring programs
- ii. install signage and /or temporary fencing to prevent unapproved use of the project area
- iii. protect environmental and property assets from fire, weeds and pests, including installation of temporary fencing, and maintenance of existing surface access tracks

- iv. install temporary site facilities for persons undertaking pre-commencement activities so long as these are located where they have no impact on the **protected matters**

**Completion data** means an environmental report and spatial data clearly detailing how the conditions of this approval have been met. The **department's** preferred spatial data format is **shapefile**. This includes, but is not limited to:

- i. actual total **Koala habitat cleared**, actual total **Greater Glider habitat cleared**, and actual total **Grey-Headed Flying-Fox foraging habitat cleared**
- ii. actual total **Koala habitat legally secured**, actual total **Greater Glider habitat legally secured**, and actual total **Grey-Headed Flying-Fox foraging habitat legally secured**
- iii. final **habitat quality score** for each **protected matter** at each of the **offset sites**.

**Completion of the action** means the time at which all specified activities associated with the action have permanently ceased.

**Completion criteria/criterion** means the increases in **habitat quality score** specified in condition 8 to be achieved at the **offset sites**.

**Compliance records** means all documentation or other material in whatever form required to demonstrate compliance with the conditions of approval in the approval holder's possession or that are within the approval holder's power to obtain lawfully.

**Compliance report/s** means written reports:

- i. providing accurate and complete details of compliance, **incidents**, and non-compliance with the conditions and the **plans**
- ii. consistent with the **department's Annual Compliance Report Guidelines (2014)**
- iii. include a **shapefile** of any clearance of any **protected matters**, or their habitat, undertaken within the relevant 12 month period
- iv. annexing a schedule of all **plans** prepared and in existence in relation to the conditions during the relevant 12 month period.

**Construction** means the erection of a building or structure that is or is to be fixed to the ground and wholly or partially fabricated on-site; the alteration, maintenance, repair or demolition of any building or structure; preliminary site preparation work which involves breaking of the ground (including pile driving); the laying of pipes and other prefabricated materials in the ground, and any associated excavation work; but excluding the installation of temporary fences and signage.

**Department** means the Australian Government agency responsible for administering the **EPBC Act**.

**Diameter at Breast Height** is the diameter of a tree's trunk measured at 1.3 metres from the ground.

**Ecologically dominant layer** means the tree layer making the greatest contribution to the overall biomass of the vegetation community.

**Environmental offsets policy** means the **EPBC Act Environmental Offsets Policy (2012)**, or current official version, including the **Offset assessment guide**.

**EPBC Act** means the *Environment Protection and Biodiversity Conservation Act 1999 (Cth)*.

**Fauna spotter/catcher** means a person licenced under the *Queensland Nature Conservation Act 1992* to detect, capture, care for, assess, and release wildlife disturbed by vegetation clearance activities.

**Greater Glider** means the species *Petauroides volans* listed as threatened under the **EPBC Act**.

**Greater Glider habitat** means all areas of Eucalypt forests or woodlands that contain, or have the potential to contain, hollow-bearing trees and in which **Greater Gliders** are present, or contiguous with **Greater Glider habitat** in which **Greater Gliders** are present (i.e. habitat which **Greater Gliders** can enter without having to overcome a barrier such as cleared land, land containing dogs, a fence or a road).

**Grey-Headed Flying-fox** means the species *Pteropus poliocephalus* listed as threatened under the EPBC Act.

**Grey-Headed Flying-fox foraging habitat** means areas of vegetation that contain Grey-headed Flying-fox foraging trees, including tree species which provide flowering resources in winter and spring for the Grey-headed Flying-fox (*Pteropus poliocephalus*).

**Guide to determining terrestrial habitat quality** means the *Guide to determining terrestrial habitat quality: A toolkit for assessing land based offsets under the Queensland Environmental Offsets Policy* (Version 1.2) (Queensland Department of Environment and Heritage Protection, 2017), or any subsequent official version.

**Guidelines for biological survey and mapped data** means the **department's** *Guidelines for biological survey and mapped data* (2018), or subsequent revision.

**Habitat quality score** is a measure of how well the offset site supports the **protected matter** and contributes to their ongoing viability based on a scale from 0 to 10. The methodology for measuring habitat quality is specified in the **Offset Area Management Plans**, is based on field surveys undertaken in accordance with the *Queensland Biocondition assessment manual (2015)* and the *Guide to determining terrestrial habitat quality (2017)*, and includes the following components:

- i. **Koala habitat:** site condition (30%), site context (30%) and species stocking rate (40%).
- ii. **Greater Glider habitat:** site condition (30%), site context (30%) and species stocking rate (40%).
- iii. **Grey-headed Flying-fox foraging habitat:** site condition (70%) and site context (30%).

**Incident** means any event which has the potential to, or does, impact on one or more **protected matter** other than as authorised by this approval.

**Independent audit** means an audit conducted by an independent and **suitably qualified person** as detailed in the *Environment Protection and Biodiversity Conservation Act 1999 Independent Audit and Audit Report Guidelines* (2019).

**Interim performance target(s)** means the minimum 5-yearly **habitat quality score** increases for each of the three **offset sites** and each **protected matter** to track progress from the starting **habitat quality score** at **year 0** towards the **completion criteria** as follows:

**Offset Site 1: Pineapple Farm**

Protected matter	Habitat quality score			
	Year 0	Year 5	Year 10	Year 15
Koala	6.39	6.67	6.94	7.22
Grey Headed Flying Fox	6.16	6.53	6.90	7.27
Greater Glider	4.63	4.85	5.07	5.28

**Offset Site 2: University Farm**

Protected matter	Habitat quality score
------------------	-----------------------

	Year 0	Year 5	Year 10	Year 15
<b>Koala</b>	4.67	5.24	5.81	6.38
<b>Grey Headed Flying Fox</b>	5.09	5.72	6.36	7.00
<b>Greater Glider</b>	3.69	4.13	4.57	5.01

**Offset Site 3: Audale**

Protected matter	Habitat quality score			
	Year 0	Year 5	Year 10	Year 15
<b>Koala</b>	5.50	5.86	6.22	6.59
<b>Grey Headed Flying Fox</b>	6.27	6.61	6.95	7.30
<b>Greater Glider</b>	3.62	4.09	4.56	5.03

**Koala** means the species *Phascolarctos cinereus* listed as threatened under the **EPBC Act**.

**Koala exclusion fencing** means fencing which prevents the movement of koalas from one area to another. Suitable examples are found in *Koala Sensitive Design Guideline: A guide to koala sensitive designed measures for planning and development activities* (Queensland Department of Environment and Heritage Protection, 2012) and in the **Koala referral guidelines**.

**Koala habitat** means any forest or woodland (including remnant, regrowth and modified vegetation communities) containing species that are Koala food trees (as defined in the **Koala referral guidelines**) or any shrubland with emergent Koala food trees and in which **Koalas** are present, or contiguous with **Koala habitat** in which **Koalas** are present (i.e. habitat which **Koalas** can enter without having to overcome a barrier such as cleared land, land containing dogs, a fence or a road).

**Koala referral guidelines** means the *EPBC Act referral guidelines for the vulnerable Koala (combined populations of Queensland, New South Wales and the Australian Capital Territory)* (Commonwealth of Australia, 2014).

**Large trees** means living trees with a **Diameter at Breast Height** greater than the threshold specified in the **benchmark** for the relevant **Regional Ecosystem** and measured in accordance with the **Guide to determining terrestrial habitat quality**. This may include both eucalypt and non-eucalypt trees depending on the relevant **Regional Ecosystem**.

**Legally secure/ing** means to provide ongoing conservation protection on the title of the land, under an enduring protection mechanism, such as a voluntary declaration under the *Vegetation Management Act 1999* (Qld) or another enduring protection mechanism agreed to in writing by the **department**, to provide in perpetuity protection for the site against development incompatible with conservation.

**Monitoring data** means the data required to be recorded under the conditions of this approval.

**Minister** means the Australian Government Minister administering the **EPBC Act** including any delegate thereof.

**Native tree species richness** means the number of native tree species present in a plot and is measured in accordance with the **Guide to determining terrestrial habitat quality**.

**Offset Area Management Plans** means the following **plans** provided to the **department** on 24 December 2021:

- i. *Draft Offset Management Plan Offset Site 1: Pineapple Farm*, revision E, prepared by S. Carruthers, (dated 8 February 2022), or a subsequent version currently approved in writing by the **Minister**
- ii. *Draft Offset Management Plan Offset Site 2: University Farm*, revision E, prepared by S. Carruthers, (dated 8 February 2022), or a subsequent version currently approved in writing by the **Minister**
- iii. *Draft OMP Offset Site 3: Audale* (dated 8 February 2022), revision E, prepared by S. Carruthers, or a subsequent version currently approved in writing by the **Minister**.

**Offset sites** means **Offset Site 1**, **Offset Site 2** and **Offset Site 3**.

**Offset Site 1** means the combined area known as “Pineapple Farm” and represented on the map at Attachment 2 by the zone enclosed by the black line, which appears in the legend as “Offset boundary MGA (GDA1994 UTM 56J)”.

**Offset Site 2** means the combined area known as “University Farm” and represented on the map at Attachment 3 by the zone enclosed by the black line, which appears in the legend as “Offset boundary MGA (GDA1994 UTM 56J)”.

**Offset Site 3** means the combined area known as “Audale” and represented on the map at Attachment 3 by the zone enclosed by the black line, which appears in the legend as “Offset boundary MGA (GDA1994 UTM 56J)”.

**Operations** means any activity associated with the action, including **clearing**, **construction** and extraction (including drilling/blasting) of quarry materials.

**Plan(s)** means any of the documents required to be prepared, approved by the **Minister**, implemented by the approval holder and published on the **website** in accordance with these conditions (includes action management plans and/or strategies).

**Project area** means the area represented on the map at Attachment 1 as the zone enclosed by the grey cross-hatching and designated “Project Disturbance Footprint MGA (GDA94 UTM 56J)”.

**Protected matter** means a matter protected under a controlling provision in Part 3 of the **EPBC Act** for which this approval has effect.

**Recruitment of woody perennial species** means the proportion of the dominant canopy (**ecologically dominant layer**) species with evidence of recruitment and is measured in accordance with the **Guide to determining terrestrial habitat quality**.

**Regional Ecosystem/s** means a vegetation community in a bioregion that is consistently associated with a particular combination of geology, landform and soil as classified by the Queensland Government under the *Vegetation Management Act 1999* (Qld). The **Regional Ecosystems** relevant to the **offset sites** are specified in the **Offset Area Management Plans**.

**Sensitive ecological data** means data as defined in the Australian Government Department of the Environment (2016) *Sensitive Ecological Data – Access and Management Policy V1.0*.

**Sequential clearing** means the provisions specified in *Sequential clearing in Koala district A or B* under the *Nature Conservation (Koala) Conservation Plan 2017* under the *Nature Conservation Act 1992* (Qld). These include provisions for the area which may be **cleared** in any one stage, periods of non-clearing between stages, maintaining habitat links and restrictions on **clearing** trees containing **Koalas**.

**Shapefile** means location and attribute information of the action provided in an Esri shapefile format. Shapefiles must contain ‘.shp’, ‘.shx’, ‘.dbf’ files and a ‘.prj’ file that specifies the projection/geographic coordinate system used. Shapefiles must also include an ‘.xml’ metadata file that describes the shapefile for discovery and identification purposes.

**Suitably qualified person** means a person who has professional qualifications, training, skills and/or experience related to the nominated subject matter and can give authoritative independent

assessment, advice and analysis on performance relative to the subject matter using the relevant protocols, standards, methods and/or literature.

**Traffic calming measures** means measures used to slow down traffic to avoid the injury or mortality of **Koalas** from vehicle collisions such as those recommended in the the most recent officially released versions of the *Koala Sensitive Design Guideline* (Department of Environment and Heritage Protection, 2012) and *Fauna Sensitive Road Design Guidelines* (Department of Transport and Main Roads, 2000).

**Tree canopy cover** as defined in the most recent officially released version of *BioCondition: A Condition Assessment Framework for Terrestrial Biodiversity in Queensland. Assessment Manual* (version 2.2, 2015), Queensland Herbarium, Department of Science, Information Technology, Innovation and Arts.

**Tree canopy height** as defined in the most recent officially released version of *BioCondition: A Condition Assessment Framework for Terrestrial Biodiversity in Queensland. Assessment Manual* (version 2.2, 2015), Queensland Herbarium, Department of Science, Information Technology, Innovation and Arts.

**Website** means a set of related web pages located under a single domain name attributed to the approval holder and available to the public.

**Weed cover** means the proportion (expressed as a percentage) of the area of particular **offset sites** in which any square metre contains a non-native plant species and is measured in accordance with the **Guide to determining terrestrial habitat quality**.

**Year 0** means the period at the **commencement of the action**.

**Year 5** means the period within five years from the **commencement of the action**.

**Year 10** means the period within ten years from the **commencement of the action**.

**Year 15** means the period within fifteen years from the **commencement of the action**.

Part D – Attachments

Attachment 1: Project area



Source: Attexo (2022), DNRME (2021),

Legend

▨ Project Disturbance Footprint MGA (GDA94 UTM 56J)

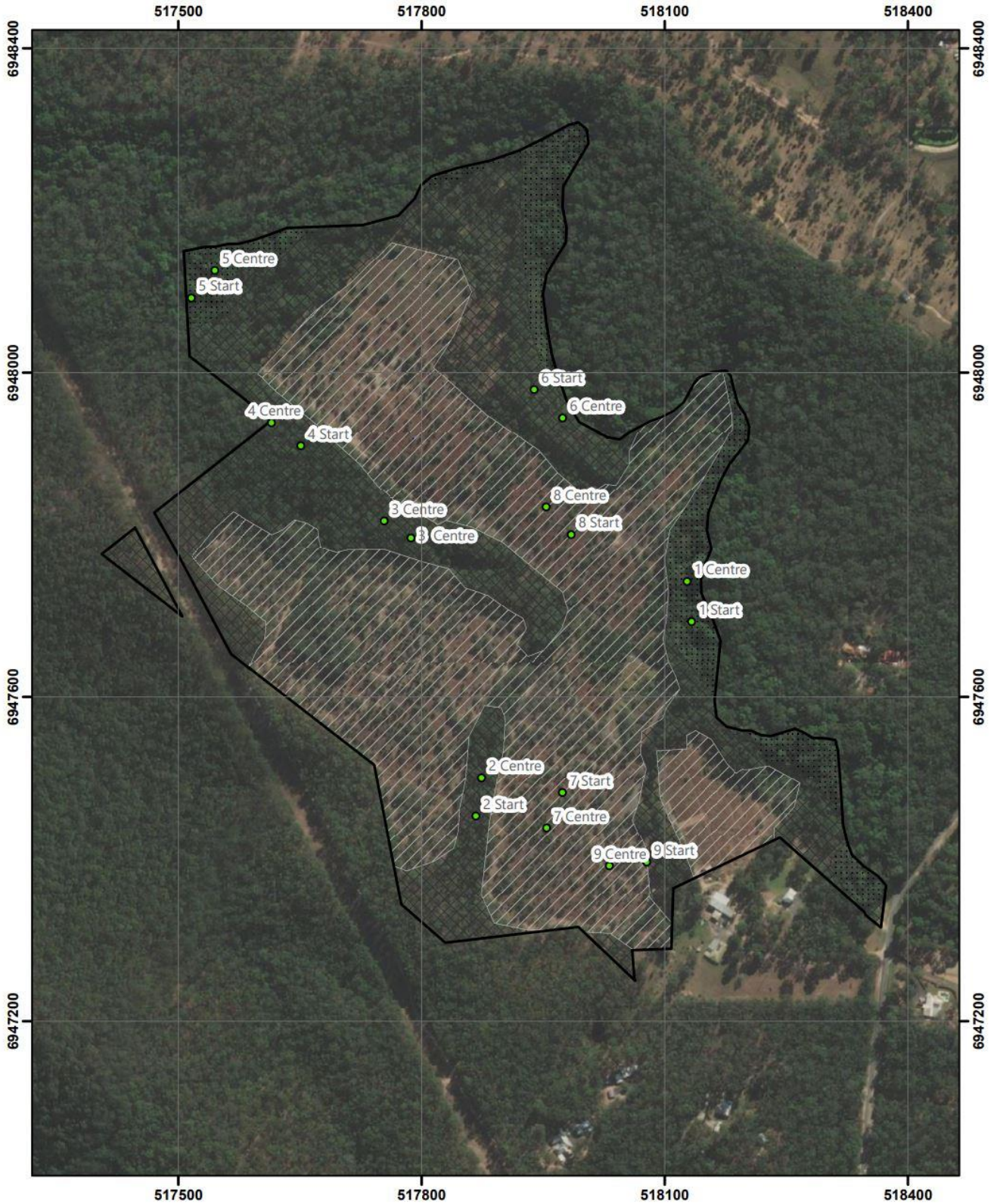
Project Disturbance Footprint

Karreman Quarries Pty Ltd  
Mount Cotton Quarry

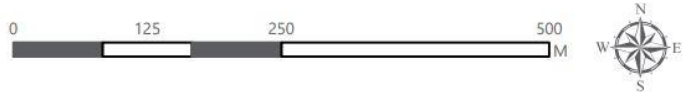
Service Layer Credits: Source: Esri, Maxar, GeoEye, Earthstar Geographics, CNES/Airbus DS, USDA, USGS, AeroGRID, IGN, and the GIS User Community



Attachment 2: Offset Site 1: Pineapple Farm



Source: Attexo (2022), DNRME (2021).



Legend

- Offset BioCondition Sites
- Offset boundary MGA (GDA1994 UTM 56J)
- AU\_No**  AU3
- AU1
- AU4
- AU2
- AU5

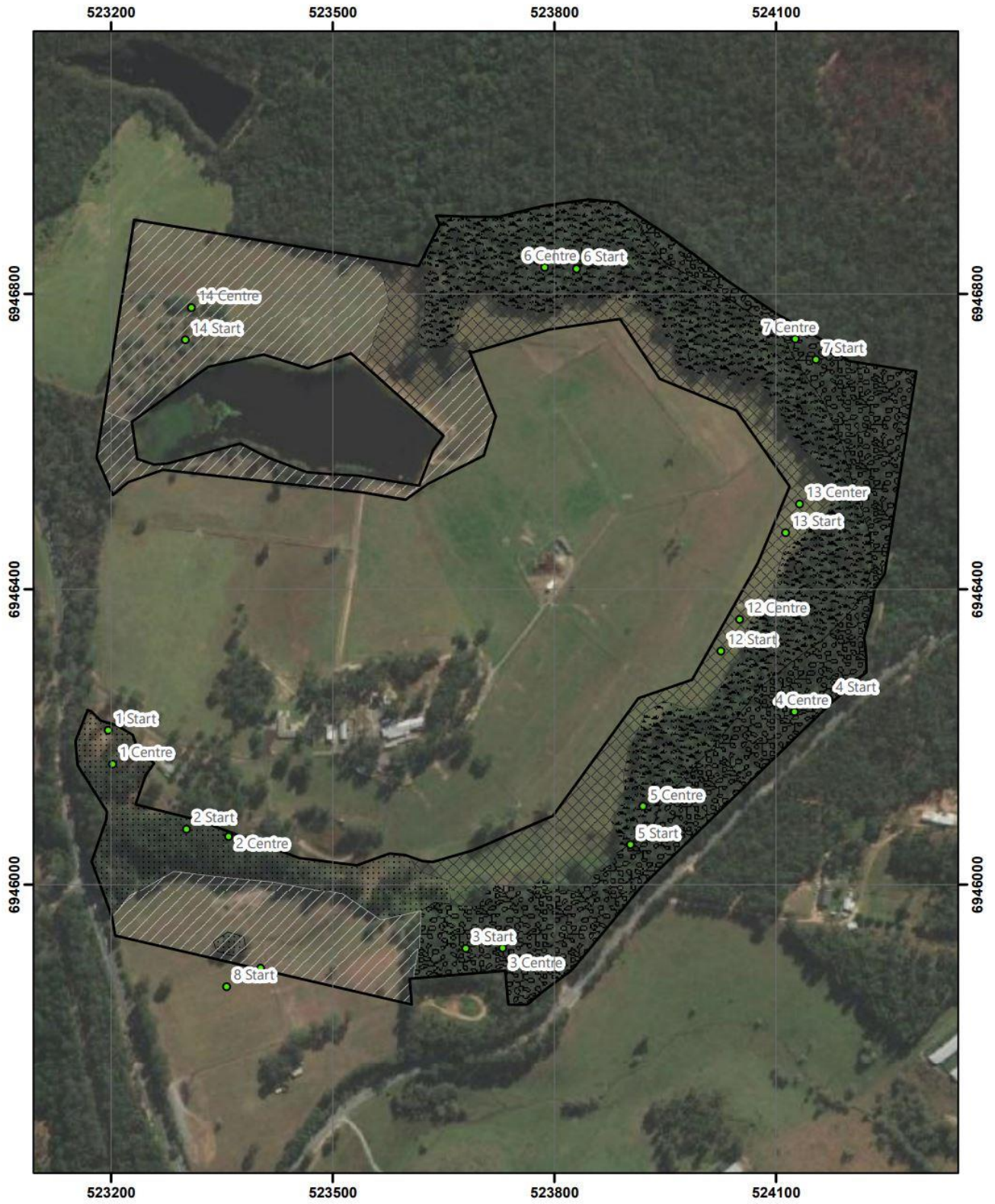
Offset Site 1 - Pineapple Farm

Karreman Quarries Pty Ltd  
Mount Cotton Quarry

Service Layer Credits: Source: Esri, Maxar, GeoEye, Earthstar Geographics, CNES/Airbus DS, USDA, USGS, AeroGRID, IGN, and the GIS User Community



Attachment 3: Offset Site 2: University Farm



Source: Attexo (2022), DNRME (2021).



Legend

- Offset BioCondition Sites
- Offset boundary MGA (GDA1994 UTM 56J)
- AU\_No**
- AU1
- AU2
- AU3
- AU4
- AU5

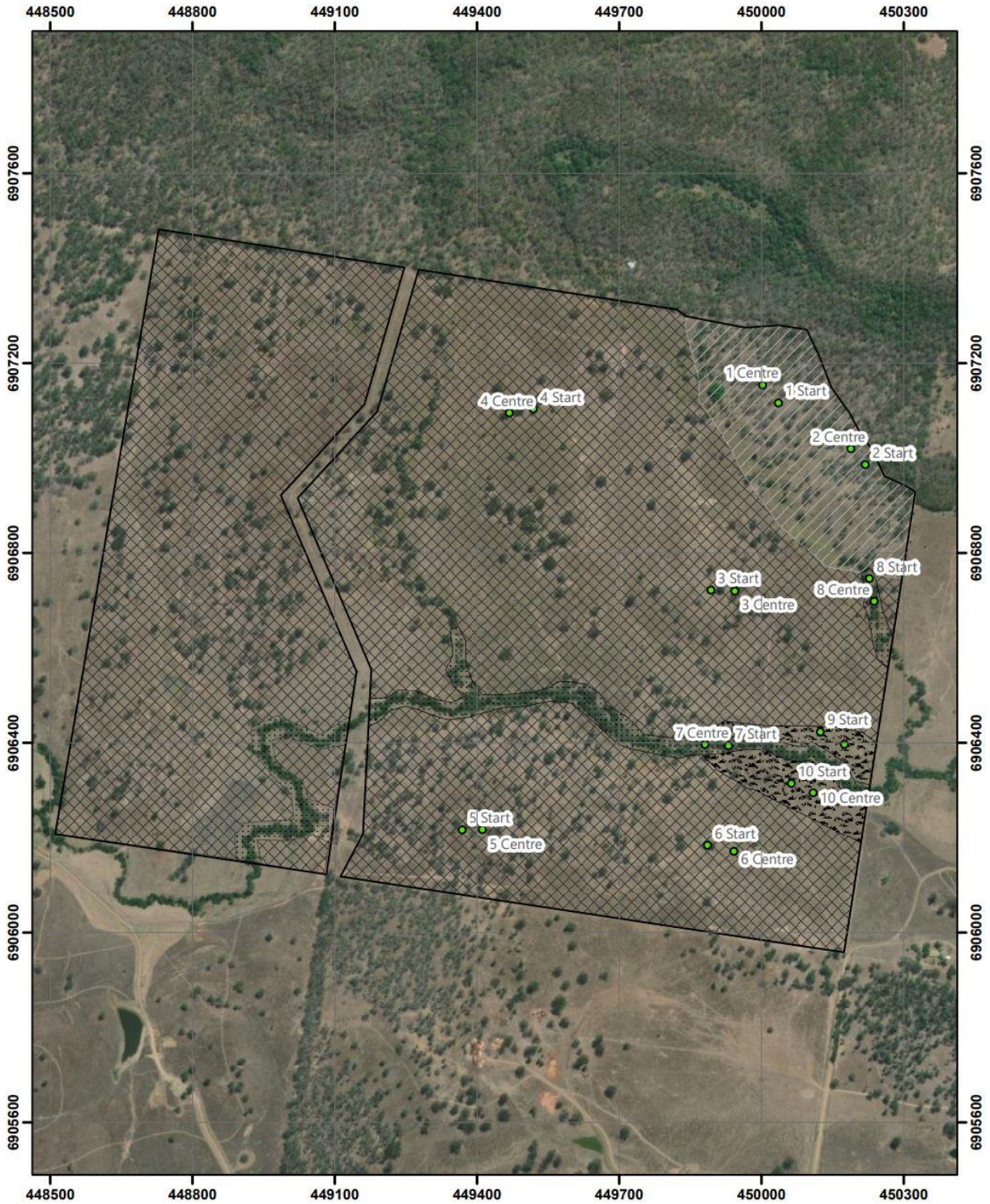
Offset Site 2 - University Farm

Karremen Quarries Pty Ltd  
Mount Cotton Quarry

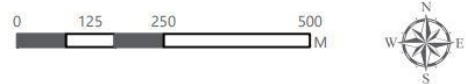
Service Layer Credits: Source: Esri, Maxar, GeoEye, Earthstar Geographics, CNES/Airbus DS, USDA, USGS, AeroGRID, IGN, and the GIS User Community



**Attachment 4: Offset Site 3: Audale**



Source: Attexo (2022), DNRME (2021).



**Legend**

- Offset BioCondition Sites
- Offset boundary MGA (GDA1994 UTM 56J)
- AU No
- ▨ AU3
- ▧ AU1
- ▩ AU4
- ▦ AU2
- AU5

Offset Site 3 - Audale

Karreman Quarries Pty Ltd  
Mount Cotton Quarry

Service Layer Credits: Source: Esri, Maxar, GeoEye, Earthstar Geographics, CNES/Airbus DS, USDA, USGS, AeroGRID, IGN, and the GIS User Community

